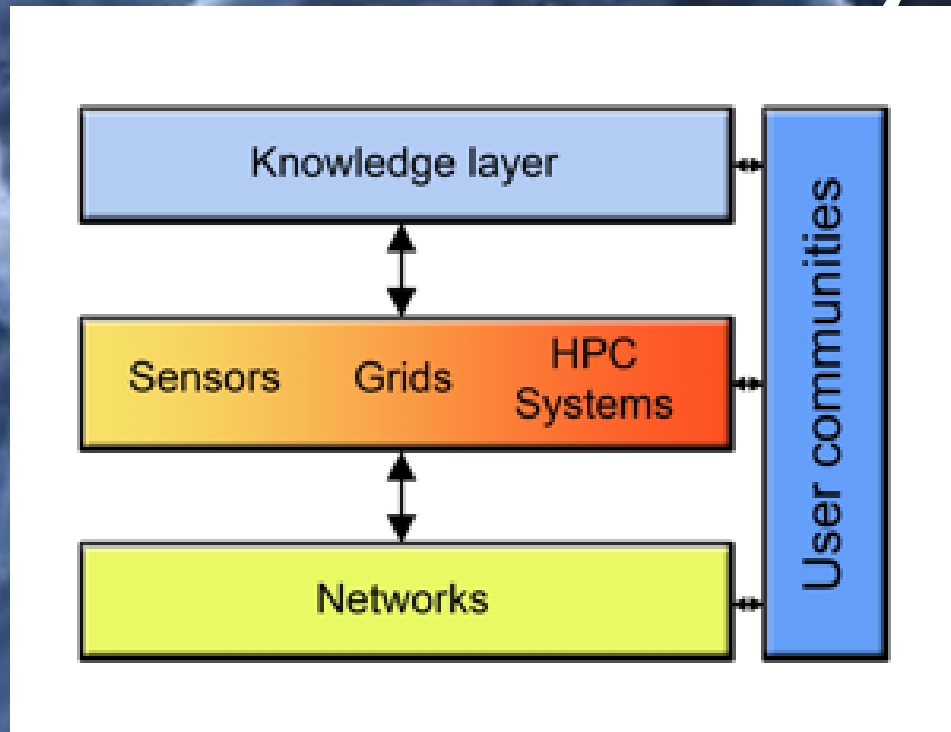




The EGI – European e-infrastructure

Michael Wilson
STFC Rutherford Appleton Laboratory

The European e-Infrastructure Ecosystem



The EGI is the European component for Grids in the European e-infrastructure.

PRACE is the HPC component – managed by EPSRC in the UK.

GÉANT/NRENS is the network.

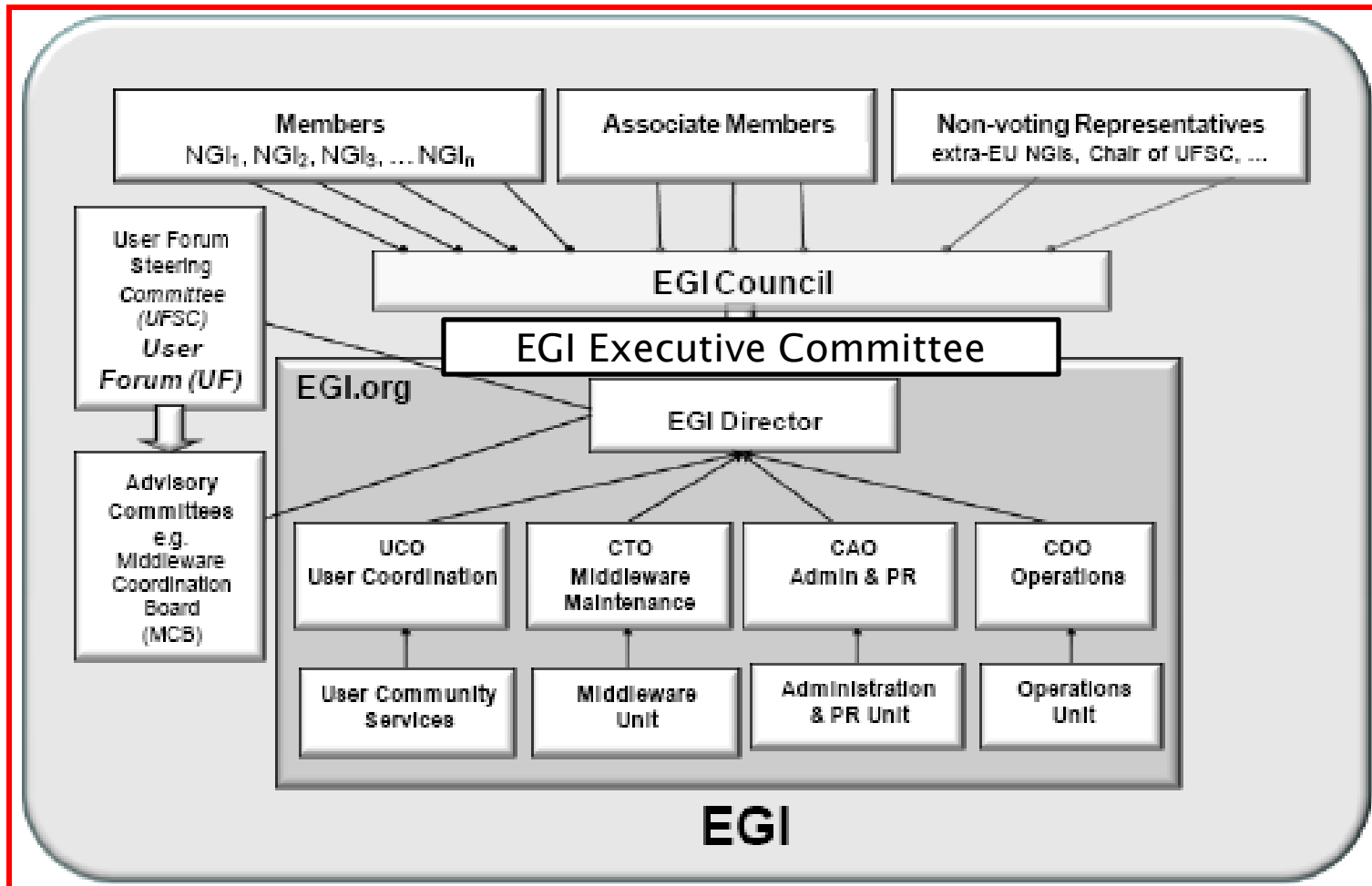
EGI Ecosystem Structure

- national e-Infrastructures, managed locally by National Grid Initiatives (NGIs)
- federated into a pan-European, general-purpose e-Infrastructure
- Sustainable funding from member states
- not strong central control
- federation of nations, not resource providers
- broad range of compute resources:
 - MPI
 - Commodity

NGI structure & role

- largely autonomous NGIs
- federated resources – compute & storage
- provides QoS guarantees through SLA
- NGS is basis of UK NGI
- Resources can be owned or bought from clouds
- Grid model of risk management by resource sharing

EGI Structure



EGI.eu Entity



- Organisation based in Amsterdam
- Legal entity being created as Netherlands Association
 - Stichting European Grid Initiative,
 - Statutes drafted
- Interim Director: Steven Newhouse
- Director Search Process underway
- Up to 50 staff centrally employed
- To be transferred to an ERIC in about a year
 - (European Research Infrastructure Consortium)
 - ERIC structure approved by Council in 2009
 - EU implementing process to create ERICs
 - Tax benefits – no VAT

Outsourced activities

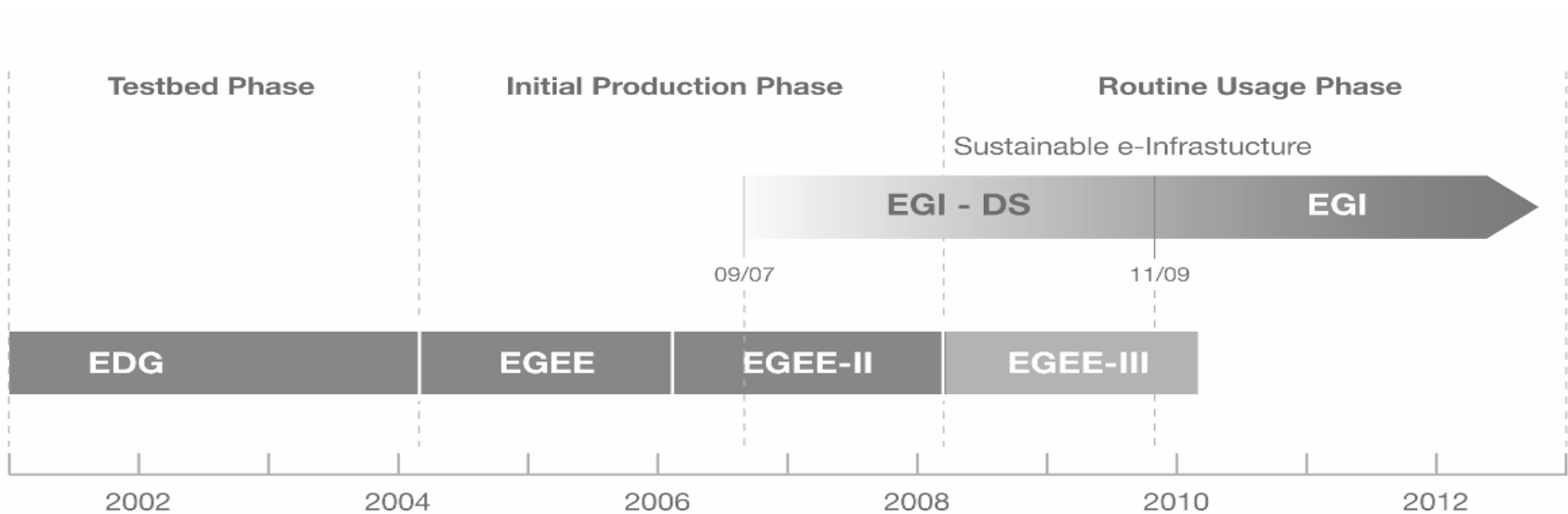
- Most EGI activities will be outsourced to NGI
- UK interest expressed in:
 - GOCDDB, accounting, security (policy & incident response), training coordination and dissemination coordination

Interim EU funding

EU Call closed 24th Nov'09 –complementary proposals:

- EGI activities proposal
- Specialist support centres for disciplines
 - Multiple proposals in different disciplines
- Unified European middleware initiative (EMI)
 - Close collaboration between gLite, ARC & UNICORE

Timescales



To be legally created by Feb 2010

To take over operations from EGEE by July 2010

EGI Council

- MoU was signed by 32 country + CERN, EMBL
- Non-EU or associated states not eligible (e.g. Russia)
- First Meeting – July '09
- Chairman: Per Öster from CSC in Finland
 - Elected during EGEE '09 Conference – Sept 09
- Fees due by Oct 09 – based on €1 million/member GDP
- UK Delegates = Neil Geddes & Andy Richards (deputy)



EGEE to EGI: transition for users

- UK e-science certificates will continue to be valid
- The EGEE VO structure will continue
- Current applications will continue to operate
- EGEE codes and jobs will continue to run
- Data will continue to be available
- To use EGEE and the EGI from the UK contact the NGS, or GridPP for particle physics

The background features a map of Europe in shades of blue and brown. Overlaid on this map is a network diagram consisting of several blue, spherical nodes connected by thin black lines. The nodes are arranged in a roughly circular pattern, with one central node connected to several surrounding nodes, which are in turn connected to other nodes on the periphery.

Questions ?

<http://www.egi.eu/>
<http://web.eu-egi.eu/>